

Hypertherm[®]

***Centricut[®] plasma torches
and consumables for
ESAB[®]***



Product is available for the following major OEM brands

AMADA®

ESAB®

KALIBURN®

KJELLBERG®

KOIKE®

KOMATSU®

LINCOLN®

THERMAL

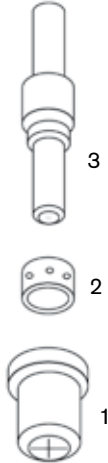
DYNAMICS®

WHITNEY®

WIEDEMANN®

OEM ESAB®

System PCM®-VPi, PCM-SMi, PCM-500i, PCM-625i, PCM-50A, PCM-875 and PCM-1125



Consumables

Centricut part number	Reference number	Description	Pkg qty
1 C31-682	19682	Tip, XL, 30 amp	10
C31-866	18866	Tip, 30 amp	5
C31-079	20079	Tip, XL, 50 amp	5
L31-820	18820	Tip, 50 amp	5
C31-008	21008	Tip, extended, 40 amp	10
C31-861	20861	Tip, extended, 50 amp	10
2 C31-463	20463	Swirl baffle, XL, 6 holes	1
C31-785	18785	Swirl baffle, 4 holes	1
3 C31-683	19683	Electrode, XL	5
C31-205	18205	Electrode	2
C31-862	20862	Electrode, extended	10
L31-679	19679	Seat	1
L31-282	20282	Heat shield, XL	1

Maintenance items

Centricut part number	Reference number	Description	Pkg qty
L31-072	20072	PT-31XL torch body, 75°	1
L31-790	950790	O-ring	5
027055	N/A	Lubricant .25 oz. (7 ml) tube	1

OEM ESAB®

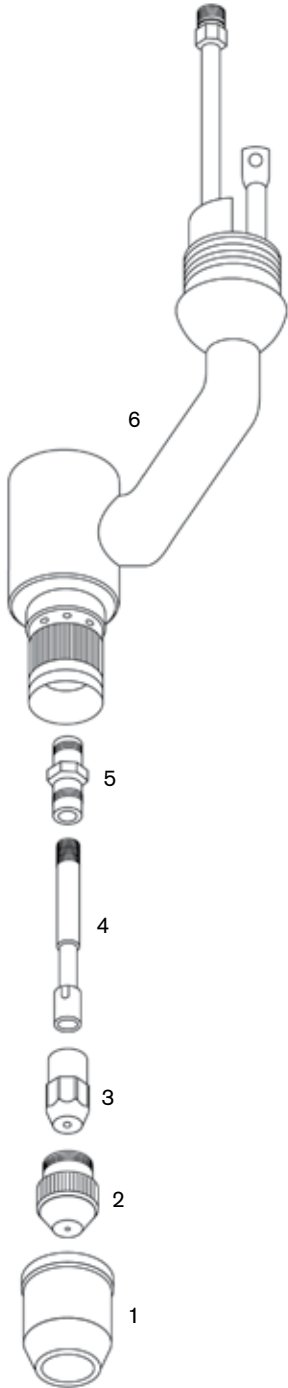
System PCM®-70, PCM-100 and PCM-150

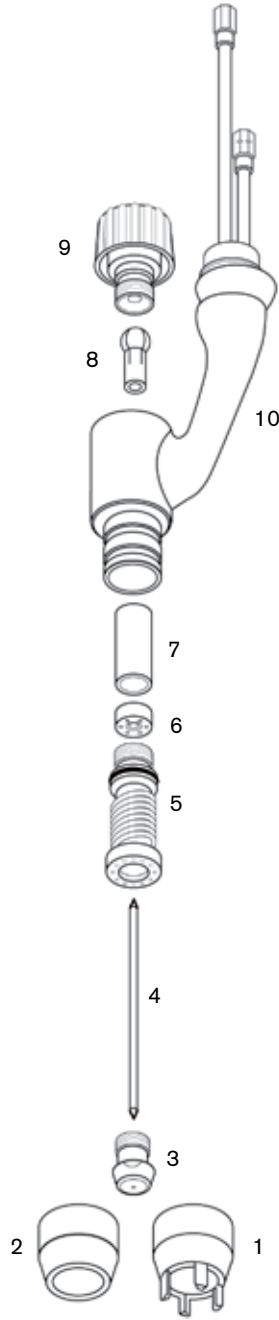
Consumables

Centricut part number	Reference number	Description	Pkg qty
L11-498	19498	Shroud cap	1
L11-502	19502	Shroud	1
L11-989	19989	Shield guard, drag	1
L11-990	19990	Shield guard	1
1 C11-124	19124	Heat shield	1
L11-747	20747	Heat shield, H.D.	1
2 C11-914	19914	Tip, .037, 30 amp	5
C11-915	19915	Tip, .046, 40 amp	5
C11-916	19916	Tip, .052, 60 amp	5
C11-917	19917	Tip, .057, 80 amp	5
C11-056	20056	Tip, .067, 100 amp	5
L11-426	20426	Tip, gouging, 70 amp	5
L11-427	20427	Tip, gouging, 100 amp	5
3 C11-918	19918	Electrode	5
4 C11-114	19114	Baffle tube	1
5 C11-053	20053	Electrode stem	1

Maintenance items

Centricut part number	Reference number	Description	Pkg qty
6 L11-010	20010	PT-17/17A machine torch body, 180°	1
L11-008	20008	PT-17/17A torch body, 75°	1
027055	N/A	Lubricant .25 oz. (7 ml) tube	1





Consumables

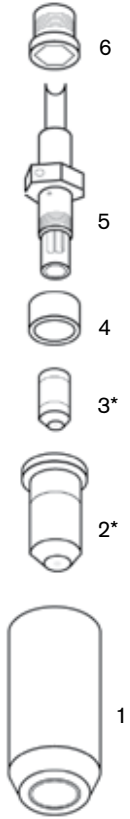
Centricut part number	Reference number	Description	Pkg qty
1 L12-620	999620	Heat shield, drag, 50 amp	1
L12-419	18419	Heat shield, drag, 120 amp	1
2 C12-261	999261	Heat shield, machine	5
3 L12-184	17184	Tip, .032	5
C12-119	17119	Tip, .047	10
C12-263	999263	Tip, .055	10
C12-264	999264	Tip, .063	10
4 C12-328	2075328	Electrode	5
5 C12-260	999260	Front body insert with o-ring	1
L12-690	19690	High current body insert with o-ring	1
6 L12-540	19540	Baffle	1
L12-691	19691	High current baffle	1
7 L12-586	999586	Spacer	5
C12-262	999262	Gasket	5

Maintenance items

Centricut part number	Reference number	Description	Pkg qty
8 L12-259	999259	Collet, brass	1
9 L12-257	999257	Torch cap	1
L12-266	999266	Center-adjust tool	1
C12-092	994092	O-ring	5
10 L12-270	999270	PT-121 machine torch	1
027055	N/A	Lubricant .25 oz. (7 ml) tube	1

OEM ESAB[®]

System PCM[®]-100, PCM-875, PCM-1125 and ESP-100i



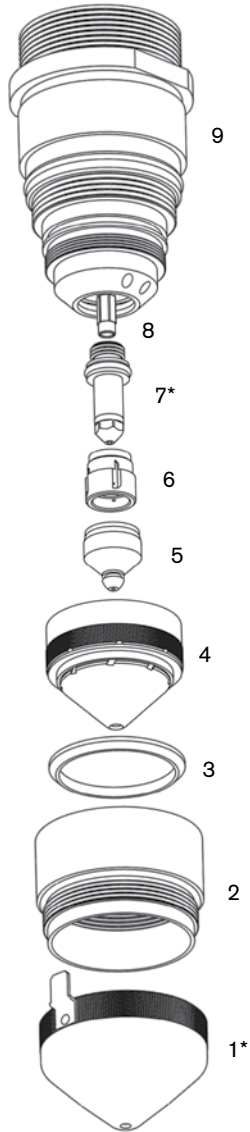
Consumables

Centricut part number	Reference number	Description	Pkg qty
1 L39-447	21447	Heat shield, 50 amp	1
L39-326	21326	Heat shield, 70 – 100 amp	1
2 C39-330*	21330	Nozzle, 50 amp	5
C39-329*	21329	Nozzle, 70 amp	5
C39-328*	21328	Nozzle, 100 amp	5
3 C39-150*	21150	Electrode	5
4 L39-373	21373	Insulator	1
L39-374	21374	Baffle tube	1
5 L39-332	21332	Electrode holder assembly (includes L39-374)	1
6 C39-372	21372	Electrode seat	1

Maintenance items

Centricut part number	Reference number	Description	Pkg qty
L39-359	21359	PT-20AM torch body assembly (includes L39-372 and L39-157)	1
L39-157	488157	O-ring	1
027055	N/A	Lubricant .25 oz. (7 ml) tube	1

* Centricut part features a unique Hypertherm design that differs from the OEM design.



Consumables

Centricut part number	Reference number	Description	Pkg qty
1 C70-531*	22531	Shield, one piece with IHS tab	1
2 C70-712	21712	Shield retainer insulator with o-ring	1
	N/A	Shield without tab	1
3 C70-010	22010	Shield cup insulator	1
4 C70-007	22007	Nozzle retainer diffuser	1
	L70-540	Nozzle A, 15 amp	1
	L70-541	Nozzle B, 30 amp	1
5 C70-542	21542	Nozzle C, 50 amp	5
	C70-543	Nozzle D, 70 amp	5
	C70-923	Nozzle E, 100 amp	5
	L70-852	Swirl baffle, 15 amp	1
	L70-536	Swirl baffle, 30 amp	1
6 C70-692	21692	Swirl baffle, 50 –100 amp	1
7 C70-1039*	21539	SilverLine [®] electrode	1

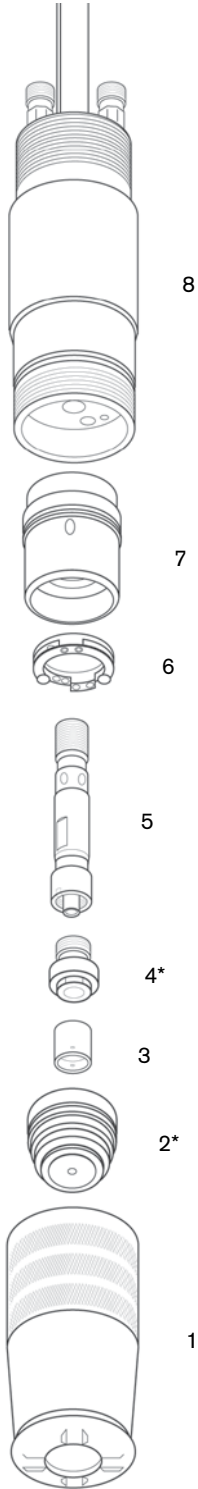
Maintenance items

Centricut part number	Reference number	Description	Pkg qty
L70-714	950714	O-ring	1
L70-797	638797	O-ring	5
L70-W18	98W18	O-ring	5
L70-W62	86W62	O-ring	1
8 L70-725	21725	Water baffle	1
9 L70-758	21758	Torch body	1
	027055	Lubricant .25 oz. (7 ml) tube	1
	L70-765	Tool, electrode and nozzle	1

* Centricut part features a unique Hypertherm design that differs from the OEM design.

OEM ESAB®

System PCM®-8, ESP®-300, ESP-400, ESP-600 and ESP-1000



Consumables

Centricut part number	Reference number	Description	Pkg qty
C10-758	20758	Nozzle retaining cap, bevel, PT-15XL	1
1 C10-759	20759	Nozzle retaining cap, PT-15XL	1
C10-230	996230	Nozzle retaining cap, PT-15	1
2 C10-691*	2075691	Nozzle assembly, N ₂ , .125, 250 amp	1
C10-611	2075611	Nozzle assembly, N ₂ , .156, 400 amp	1
C10-614	2075614	Nozzle assembly, N ₂ , .156, reverse swirl	1
C10-612	2075612	Nozzle assembly, N ₂ , .200, 600 amp	1
C10-615	2075615	Nozzle assembly, N ₂ , .200, reverse swirl	1
C10-613	2075613	Nozzle assembly, N ₂ , .230, 750 amp	1
C10-690	2075690	Nozzle assembly, N ₂ , .230, reverse swirl	1
L10-587	2075587	Nozzle assembly, N ₂ , .250, 875 – 1000 amp	1
C10-317	37317	Nozzle, 125 amp, PT-15XL (use with C10-142 and C10-1066)	1
C10-318	N/A	Nozzle base, 125 amp, PT-15XL	1
C10-319	N/A	Nozzle insulator, 125 amp, PT-15XL	1
C10-586	2075586	Gas swirl baffle, ceramic, 8 x .067, 260 amp	1
C10-142	948142	Gas swirl baffle, ceramic, 4 hole, 100 – 280 amp	1
3 C10-341	2075341	Gas swirl baffle, poly, 4 hole	1
C10-360	2075360	Gas swirl baffle, poly, reverse swirl, 4 hole	1
L10-918	20918	Gas swirl baffle, 8 x .067, reverse, 260 amp	1
4 C10-236*	600236	Electrode tip, N ₂	5
5 C10-343	2075343	Electrode tip holder, N ₂	1
6 C10-940	21940	Contact ring assembly	1

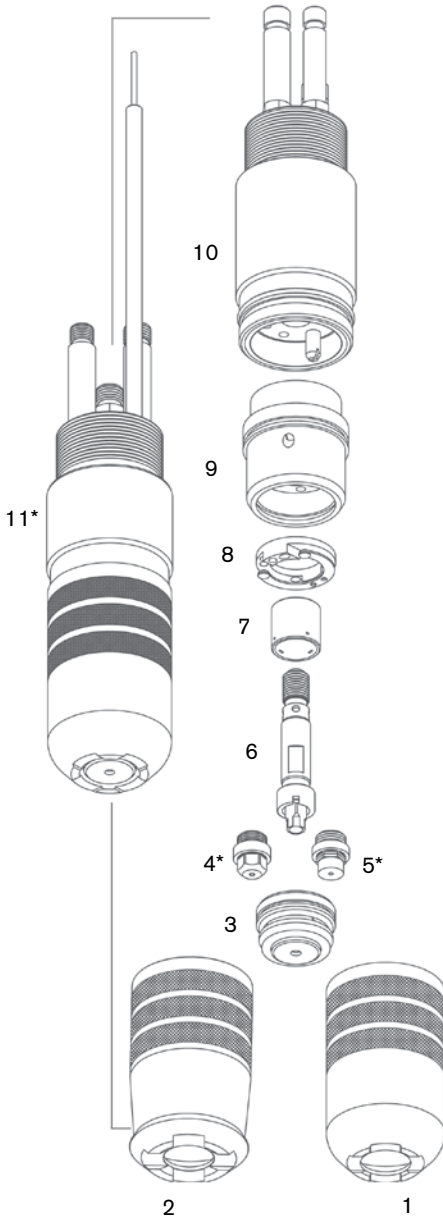
Maintenance items

Centricut part number	Reference number	Description	Pkg qty
C10-403	20403	PA bus insulator	1
C10-755	20755	Insulator body with o-ring, PT-15XL	1
7 C10-232	996232	Insulator body with o-ring, PT-15	1
8 C10-754	20754	Torch body, PT-15XL	1
C10-240	996240	Torch body, PT-15	1
C10-483	19483	Double threaded mounting tube	1
C10-932	N/A	O-ring kit, insulator body	1
L10-588	2075588	Insulator, high current nozzle	1
L10-859	21859	Sleeve assembly, air curtain	1
L10-408	20408	High frequency connector	1
L47-110	37110	Electrode holder – removal tool	1
027055	N/A	Lubricant .25 oz. (7 ml) tube	1

* Centricut part features a unique Hypertherm design that differs from the OEM design.

OEM ESAB®

System PCM®-8, ESP®-300, ESP-400, ESP-600 and ESP-1000



Consumables

Centricut part number	Reference number	Description	Pkg qty	
1	C10-758	20758	Nozzle retaining cap, bevel, PT-15XL	1
2	C10-759	20759	Nozzle retaining cap, PT-15XL	1
	C10-262	21962	Nozzle, 300 amp, bevel	1
	C10-063	21963	Nozzle, 300 amp, reverse bevel	1
	C10-317	37317	Nozzle, 125 amp, PT-15XL (use with C10-142 and C10-1066)	1
	C10-318	N/A	Nozzle base, 125 amp, PT-15XL	1
	C10-661	N/A	Nozzle base, O ₂ , 300 amp	1
	C10-319	N/A	Nozzle insulator, 125 amp, PT-15XL	1
3	C10-751	20751	Nozzle, O ₂ , 260 amp	1
	C10-962	35662	Nozzle, O ₂ , 300 amp	1
	C10-662	35662	Nozzle, O ₂ , 300 amp (replaceable ceramic)	1
	C10-664	35664	Nozzle, O ₂ , 340 – 360 amp	1
	C10-665	35665	Nozzle, O ₂ , 340 – 360 amp, reverse	1
	C10-920	20920	Nozzle, O ₂ , .099, 260 amp, reverse	1
4	C10-1063*	20763	SilverLine® electrode, 260 amp	1
	C47-1096*	34086	SilverLine electrode, 50 – 250 amp, bevel	1
5	C10-1066*	35666	SilverLine electrode, 300 – 360 amp	1
	C10-763*	20763	Electrode, O ₂	1
6	C10-398	20398	Electrode holder, O ₂	1
	C47-084	34084	Electrode holder	1
7	C10-586	2075586	Gas swirl baffle, ceramic, 8 x .067, 260 amp	1
	L10-918	20918	Gas swirl baffle, 8 x .067, reverse, 260 amp	1
	C10-142	948142	Gas swirl baffle, ceramic, 4 hole, 100 – 280 amp	1
	L47-143	948143	Gas swirl baffle, 4 x .032, reverse, 70 – 200 amp	1
	C10-660	35660	Gas swirl baffle, 8 hole, standard, 300 – 600 amp	1
	L47-661	35661	Gas swirl baffle, 8 x .047, reverse, 250 – 400 amp	1
8	C10-940	21940	Contact ring assembly	1

Maintenance items

Centricut part number	Reference number	Description	Pkg qty	
	C10-403	20403	PA bus insulator	1
9	C10-755	20755	Insulator body with o-ring kit	1
	C10-242	996242	Locating pin	1
10	C10-754	20754	Torch body	1
11	C10-954*	16365	Torch assembly, SilverLine, O ₂ , 260 amp (includes items 1 – 10)	1
	C10-955*	16365	Torch assembly, SilverLine, O ₂ , 300 amp (includes items 1 – 10)	1
	C10-483	19483	Double threaded mounting tube	1
	C10-932	N/A	O-ring kit, insulator body	1
	L10-630	999630	Electrode holder removal tool	1
	C10-W99	86W99	O-ring, electrode holder	5
	C10-W85	86W85	O-ring, insulator body center	5
	C10-526	996526	O-ring, insulator body small	5
	C10-527	996527	O-ring, inside insulator body, front	5
	C10-528	996528	O-ring, outside insulator body and torch	5
	C10-106	2064106	O-ring, insulator body rear edge, red	5
	L10-082	21082	Pilot arc bus wire	1
	L10-408	20408	High frequency connector	1
	L47-551	21551	Air curtain sleeve	1
	L47-110	37110	Electrode stem tool	1
	L10-568	996568	Electrode removal tool	1
	L10-4775	34775	Power cable, 4.5 ft.	1
	027055	N/A	Lubricant .25 oz. (7 ml) tube	1

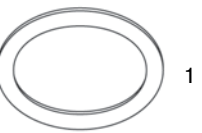
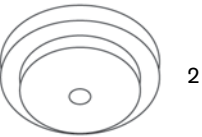
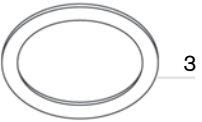
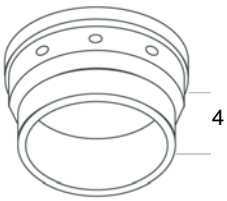
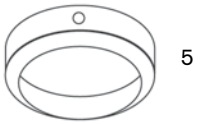
* Centricut part features a unique Hypertherm design that differs from the OEM design.

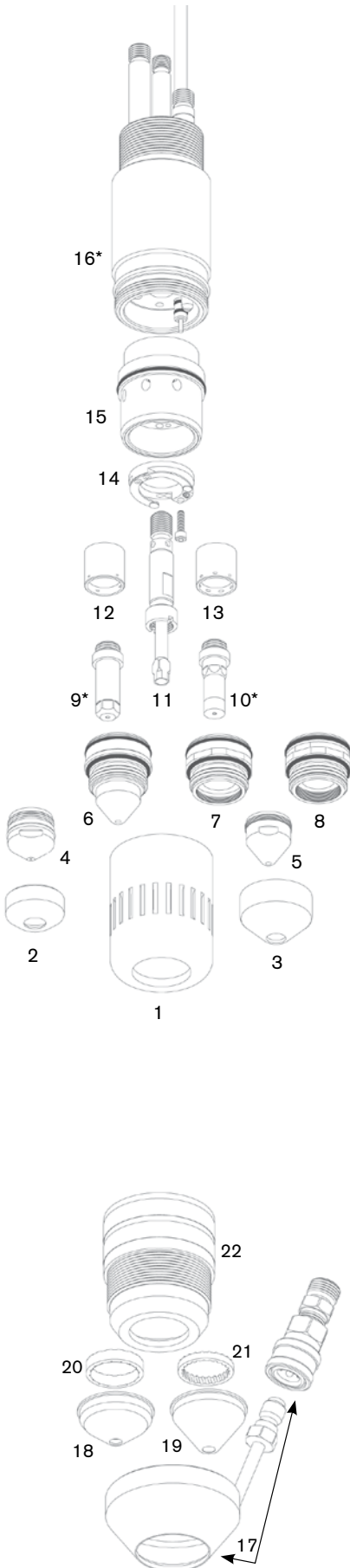
OEM ESAB®

System PCM®-8, ESP®-300, ESP-400, ESP-600 and ESP-1000

Consumables

Centricut part number	Reference number	Description	Pkg qty
1 C10-628	996628	Gasket	5
2 C10-693	2075693	Insulator, .140	5
C10-617	2075617	Insulator, .180	5
C10-606	2075606	Insulator, .225	5
C10-607	2075607	Insulator, .260	5
3 C10-619	996619	Spacer	5
4 C10-618	996618	Centering sleeve	5
5 C10-584	2075584	Water swirl ring, standard	5
C10-616	2075616	Water swirl ring, reverse	5
6 C10-694	2075694	Nozzle base, .125	5
C10-608	2075608	Nozzle base, .156	5
C10-609	2075609	Nozzle base, .200	5
C10-610	2075610	Nozzle base, .230	5





Consumables

Centricut part number	Reference number	Description	Pkg qty
1 L47-085	34085	Nozzle retaining cap	1
C47-082	37082	Nozzle retaining cap	1
2 L47-885	34885	Heat shield, 50 amp	1
3 C47-186	948186	Heat shield, Std, 100 – 360 amp	1
L47-506	19506	Heat shield, heavy duty, 100 – 360 amp	1
4 C47-026	22026	Nozzle tip, .041, 50 amp	1
5 C47-029	22029	Nozzle tip, .071, 100 amp	1
C47-030	22030	Nozzle tip, .082, 150 amp	1
C47-031	22031	Nozzle tip, .091, 200 amp	1
C47-922	22032	Nozzle tip, 250 amp	1
C47-985	22034	Nozzle tip, 360 amp	1
C47-995	22033	Nozzle tip, 400 amp	1
C47-822	21822	Nozzle, .099, 250 amp	1
6 C47-885	35885	Nozzle, .120, 360 amp	1
C47-195	22195	Nozzle, .130, 400 amp	1
C47-027	22027	Nozzle base, 50 amp	1
7 C47-028	22028	Nozzle base, 100 – 400 amp	1
8 C47-928	N/A	Nozzle base, extended life, 100 – 400 amp	1
9 C47-1096*	34086	SilverLine® electrode, 250 amp	1
10 C47-1086*	35886	SilverLine electrode, 360 amp	1
C47-996	34086	Electrode, CopperLine®, 250 amp	1
11 C47-084	34084	Electrode holder	1
12 C47-142	948142	Gas swirl baffle, 4 hole, standard, 100 – 280 amp	1
L47-143	948143	Gas swirl baffle, 4 hole, reverse, 70 – 200 amp	1
C47-586	2075586	Gas swirl baffle, 8 hole, standard, 260 amp	1
13 C10-660	35660	Gas swirl baffle, 8 hole, standard, 300 – 600 amp	1
L10-918	20918	Gas swirl baffle, 8 hole, reverse, 260 amp	1
14 C47-940	21940	Contact ring assembly	1

Maintenance items

Centricut part number	Reference number	Description	Pkg qty
C10-403	20403	PA bus insulator	1
15 C47-434	20434	Insulator assembly	1
16 C47-391*	20391	PT-19XL torch body	1
C47-990*	N/A	Torch assembly, SilverLine, 150 amp	1
C47-991*	N/A	Torch assembly, SilverLine, 250 amp	1
C47-992*	N/A	Torch assembly, SilverLine, 360 amp	1
L47-110	37110	Electrode holder – removal tool	1
C14-793	85W10	O-ring, rear insulator	3
C10-W99	86W99	O-ring, electrode holder	5
C47-528	996528	O-ring, outside insulator body and torch	5
C47-999	N/A	O-ring kit, insulator body	1
C10-106	2064106	O-ring, insulator body rear edge, red	5
C47-W85	86W85	O-ring, insulator body center	5
C47-526	996526	O-ring, insulator body small	5
C47-527	996527	O-ring, inside insulator body	5
C10-483	19483	Double threaded mounting tube	1
L47-551	21551	Air curtain sleeve	1
L10-408	20408	High frequency connector	1
L10-4775	34775	Power cable, 4.5 ft.	1
L10-568	996568	Electrode removal tool	1
C47-006	181W89	O-ring, nozzle	5
027055	N/A	Lubricant .25 oz. (7 ml) tube	1

PT-19XL+S

Consumables

Centricut part number	Reference number	Description	Pkg qty
17 L47-801	21801	Shield retainer assembly	1
18 L47-795	21795	Shield, 50 amp	5
19 C47-802	21802	Shield, 100 – 250 amp	1
C47-945	21945	Shield, 300 – 400 amp	1
20 L47-796	21796	Diffuser, 50 amp	1
21 C47-944	21944	Diffuser, 100 – 600 amp	1
22 L47-982	21982	Nozzle retaining cup	1

* Centricut part features a unique Hypertherm design that differs from the OEM design.

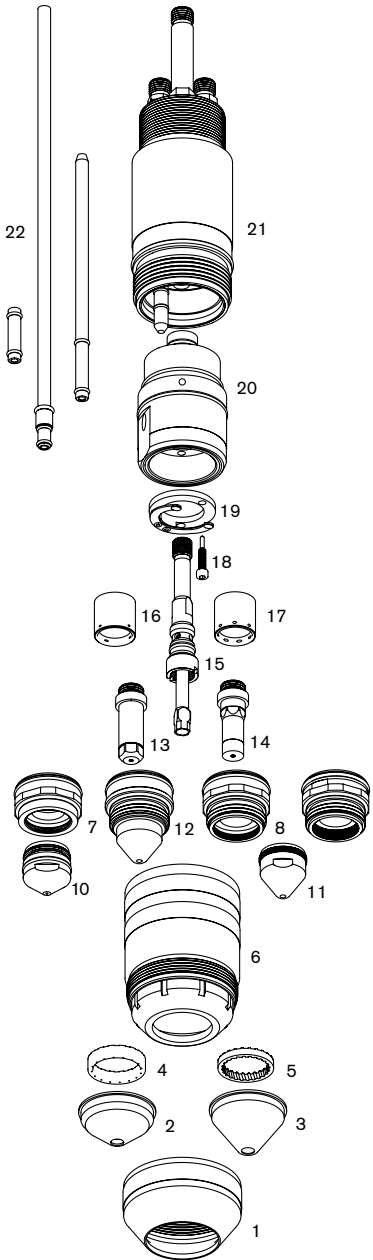
Consumables

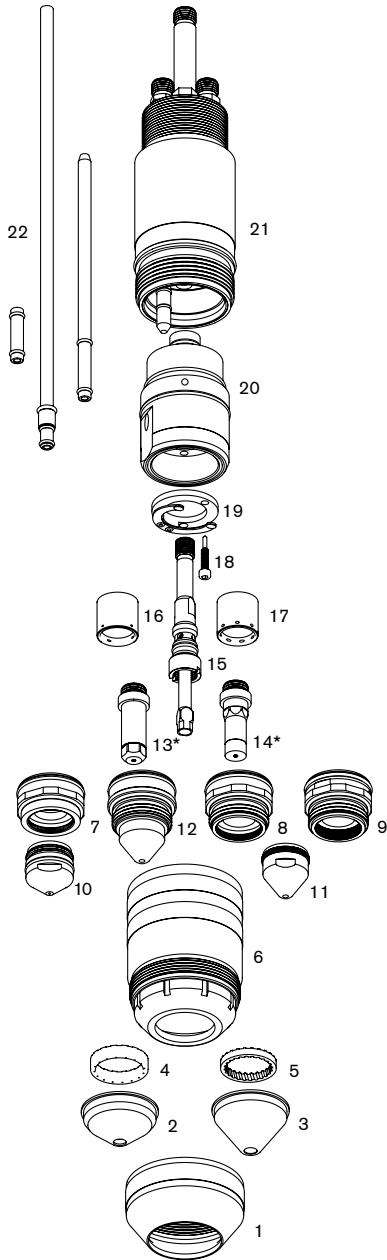
Centricut part number	Reference number	Description	Pkg qty	
1	C47-081	37081	Shield retainer	1
2	L47-795	21795	Shield, 50 amp	5
3	C47-802	21802	Shield, 100 – 250 amp	1
	C47-945	21945	Shield, 325 – 600 amp	1
4	L47-796	21796	Diffuser, 50 amp	1
5	C47-944	21944	Diffuser, 100 – 600 amp	1
	C47-496	22496	Diffuser, 100 – 600 amp, reverse, black	1
6	C47-082	37082	Nozzle retaining cap	1
	L47-431	37431	Nozzle retaining cap, air curtain	1
7	C47-027	22027	Nozzle base, 50 amp	1
8	C47-028	22028	Nozzle base, 100-360 amp	1
9	C47-928	N/A	Nozzle base, extended life, 100-400 amp	1
10	C47-026	22026	Nozzle tip, .041, 50 amp	1
11	C47-029	22029	Nozzle tip, .071, 100 amp	1
	C47-030	22030	Nozzle tip, .082, 150 amp	1
	C47-031	22031	Nozzle tip, .091, 200 amp	1
	C47-922	22032	Nozzle tip, 250 amp	1
	C47-985	22034	Nozzle tip, 360 amp	1
	C47-995	22033	Nozzle tip, 400 amp	1
12	C47-822	21822	Nozzle, .099, 250 amp	1
	C47-885	35885	Nozzle, .120, 360 amp	1
	C47-195	22195	Nozzle, .130, 400 amp	1
	L47-401	22401	Nozzle, 600 amp	1
13	C47-1096	34086	SilverLine® electrode, 50 – 250 amp	1
14	C47-1086	35886	SilverLine electrode, 360 amp	1
	C47-996	34086	Electrode, CopperLine®, 250 amp	1
	L47-196	22196	Electrode, 400 amp	1
	L47-403	22403	Electrode, N ₂ /ArH ₂ , 600 amp	5
16	C47-142	948142	Gas swirl baffle, 4 hole, standard, 100 – 280 amp	1
	L47-143	948143	Gas swirl baffle, 4 hole, reverse, 70 – 200 amp	1
	C47-586	2075586	Gas swirl baffle, 8 hole, standard, 260 amp	1
17	C10-660	35660	Gas swirl baffle, 8 hole, standard, 300 – 600 amp	1
	L47-194	22194	Gas swirl baffle, standard, 400 amp	1
	C122-530R	0558002530R	Gas swirl baffle, 8 x .047, reverse, 360 – 450 amp	1
18	C47-073	37073	Screw, contact ring	1
19	C47-071	37071	Contact ring assembly	1

Maintenance items

Centricut part number	Reference number	Description	Pkg qty	
	C47-528	996528	O-ring, outside insulator body and torch	5
	C10-106	2064106	O-ring, insulator body rear edge, red	5
20	C47-083	37083	Insulator body	1
22	C47-900	N/A	Insulating tube kit, PT-19XLS/PT-600	1
15	C47-068	37068	Electrode holder	1
21	C47-066	37066	Torch body	1
	C47-993	N/A	Torch assembly, SilverLine, 250 amp	1
	C47-994	N/A	Torch assembly, SilverLine, 360 amp	1
	C10-483	19483	Double threaded mounting tube	1
	C10-033	951000	O-ring, Teflon® tubes	5
	C10-W85	86W85	O-ring, insulator body center	1
	C10-106	2064106	O-ring, insulator body rear edge, red	5
	C47-998	N/A	O-ring kit, insulator body	1
	C47-528	996528	O-ring, insulator assembly	1
	C47-006	181W89	O-ring, nozzle	1
	L47-110	37110	Electrode holder removal tool	1
	L10-408	20408	High frequency connector	1
	C47-900	N/A	Insulating tube kit, PT-19XLS/PT-600	1
	L47-063	37063	Locating pin	1
	L47-075	37075	P.A. collet and wire assembly	1
	027055	N/A	Lubricant .25 oz. (7 ml) tube	1

Centricut, SilverLine and CopperLine are registered trademarks of Hypertherm, Inc. and may be registered in the United States and/or other countries. All other trademarks are the properties of their respective owners. Centricut is in no way affiliated with ESAB.





Consumables

Centricut part number	Reference number	Description	Pkg qty
1 C47-081	37081	Shield retainer	1
2 L47-795	21795	Shield, 50 amp	5
3 C47-802	21802	Shield, 100 – 250 amp	1
C47-945	21945	Shield, 325 – 600 amp	1
L96-4678	0558004678	Shield	5
4 L47-796	21796	Diffuser, 50 amp	1
5 C47-944	21944	Diffuser, 100 – 600 amp	1
C47-496	22496	Diffuser, 100 – 600 amp, reverse, black	1
6 C47-082	37082	Nozzle retaining cap	1
L47-431	37431	Nozzle retaining cap, air curtain	1
7 C47-027	22027	Nozzle base, 50 amp	1
8 C47-028	22028	Nozzle base, 100 – 360 amp	1
9 C47-928	N/A	Nozzle base, extended life, 100 – 400 amp	1
10 C47-026	22026	Nozzle tip, .041, 50 amp	1
11 C47-029	22029	Nozzle tip, .071, 100 amp	1
C47-030	22030	Nozzle tip, .082, 150 amp	1
C47-031	22031	Nozzle tip, .091, 200 amp	1
C47-922	22032	Nozzle tip, 250 amp	1
C47-985	22034	Nozzle tip, 360 amp	1
C47-995	22033	Nozzle tip, 400 amp	1
12 C47-822	0558001623	Nozzle, .099, 250 amp	1
C47-885	0558001885	Nozzle, .120, 360 amp	1
C47-195	0558001886	Nozzle, .130, 400 amp	1
L47-401	0558001887	Nozzle, 600 amp	1
13 C96-1024*	0558001624	SilverLine® electrode, 250 amp	1
14 C96-1016*	0558002516	SilverLine electrode, 360/400 amp	1
L96-2499	0558002499	Electrode, N ₂	1
15 C96-621	0558001621	Electrode holder	1
16 C47-142	0558002533	Gas swirl baffle, 4 hole, standard, 100 – 280 amp	1
L47-143	0558002534	Gas swirl baffle, 4 hole, reverse, 70 – 200 amp	1
L47-661	35661	Gas swirl baffle, 8 hole, reverse, 250 – 400 amp	1
17 C10-660	0558001625	Gas swirl baffle, 8 hole, standard, 300 - 600 amp	1
L47-194	22194	Gas swirl baffle, standard, 400 amp	1
C122-530R	0558002530R	Gas swirl baffle, 8 x .047, reverse, 360 – 450 amp	1

Maintenance items

Centricut part number	Reference number	Description	Pkg qty
18 C47-073	37073	Screw, contact ring assembly	1
19 C47-071	37071	Contact ring assembly	1
C47-528	996528	O-ring, outside insulator body and torch	5
C47-998	N/A	O-ring, kit, insulator body	1
C10-483	19483	Double threaded mounting tube	1
20 C47-083	37083	Insulator body	1
22 C47-900	N/A	Insulating tube kit, PT-19XLS/PT-600	1
C96-925	0558001825	Torch body, modular	1
21 C47-066	37066	Torch body	1
C96-993*	N/A	Torch assembly, SilverLine, 250 amp	1
C96-994*	N/A	Torch assembly, SilverLine, 360 amp	1
L96-4611	0558004611	Electrode, holder, tool	1
L10-4775	34775	Power cable, 4.5 ft.	1
027055	N/A	Lubricant .25 oz. (7 ml) tube	1

* Centricut part features a unique Hypertherm design that differs from the OEM design.

OEM ESAB®

System ESP®-200/300/400-600C/1000, PCM®-150/1500/8XL

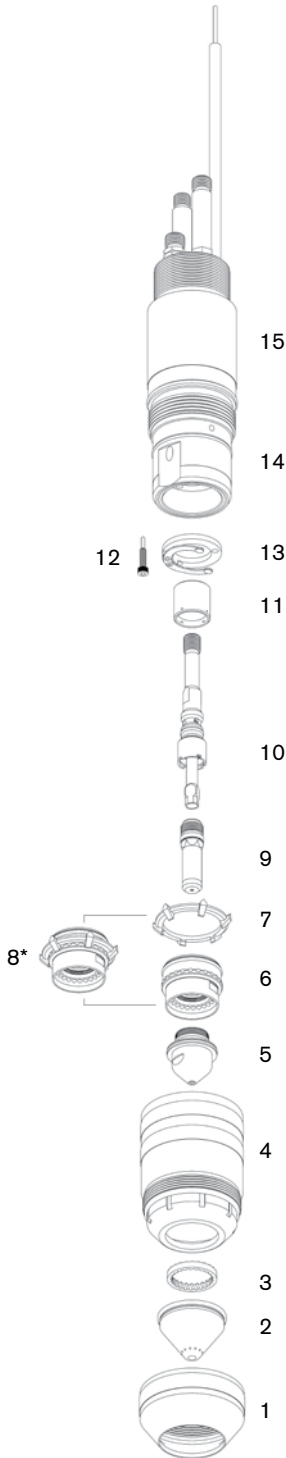
Consumables

Centricut part number	Reference number	Description	Pkg qty
1 C47-081	37081	Shield retainer	1
2 C120-920*	N/A	MultiPort shield, 200	1
C120-900	N/A	MultiPort shield, 260 amp	1
C120-936	N/A	MultiPort shield, 360 amp	1
3 C47-944	21944	Diffuser, 100 – 600 amp	1
4 C47-082	37082	Nozzle retaining cap	1
5 C120-200	N/A	CoolFlow™ nozzle tip, 200 amp	1
C120-260	N/A	CoolFlow nozzle tip, 260 amp	1
C120-360	N/A	CoolFlow nozzle tip, 360 amp	1
15 C120-2200*	N/A	CoolFlow nozzle kit, 200 amp, 20 pack	1
C120-2260*	N/A	CoolFlow nozzle kit, 260 amp, 20 pack	1
C120-2360*	N/A	CoolFlow nozzle kit, 360 amp, 20 pack	1
6 C120-010*	N/A	CoolFlow nozzle base	1
7 C120-020*	N/A	Baffle, coolant	1
8 C120-030*	N/A	CoolFlow nozzle base assembly	1
9 C120-1010*	N/A	SilverLine® electrode	1
10 C96-621	0558001621	Electrode holder	1
11 C10-660	0558001625, 35660	Gas swirl baffle, 8 hole, standard, 300 – 600 amp	1
C47-142	0558002533, 948142	Gas swirl baffle, 4 hole, 100 – 280 amp	1

Maintenance items

Centricut part number	Reference number	Description	Pkg qty
12 C47-073	37073	Screw, contact ring assembly	1
13 C47-071	37071	Contact ring assembly	1
14 C47-083	37083	Insulator body	1
15 C47-066	37066	Torch body	1
C96-925	0558001825	Torch body modular	1
C47-006	181W89	O-ring, nozzle	5
7 C47-998	N/A	O-ring, kit, insulator bod	1
6 C120-012	N/A	Wrench, elec/nozzle	1
C120-013	N/A	Wrench, nozzle base	1

* Centricut part features a unique Hypertherm design that differs from the OEM design.

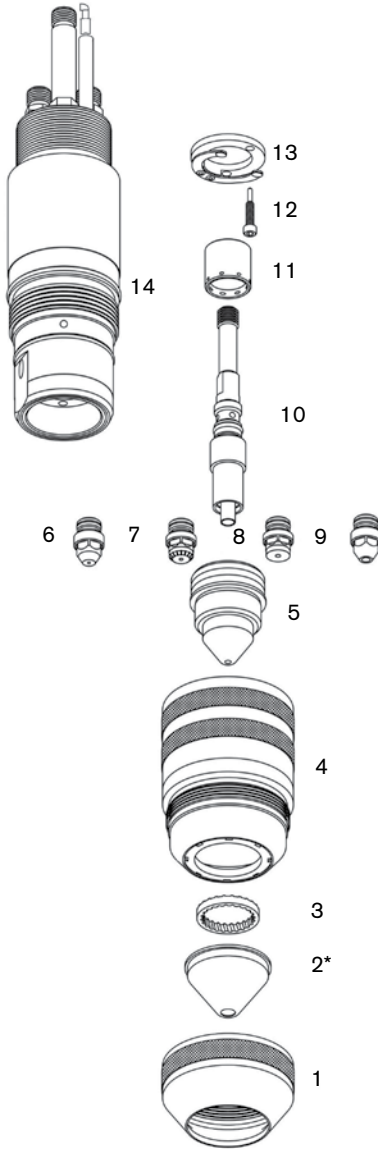


Significantly improve:

Consumable Life

Cutting speed

Cut quality



Consumables

Centricut part number	Reference number	Description	Pkg qty
1 C47-081	37081	Shield retainer	1
L122-616	0558004616	Shield retainer, insulated	1
2 C122-624	0558007624	Shield, 2.4 mm, 45 – 55 amp	1
C122-130	0558006130	Shield, 3.0 mm, 35 – 50 amp	1
C122-141	0558006141	Shield, 4.1 mm, 100 – 280 amp	1
C122-166	0558006166	Shield, 6.6 mm, 260 – 450 amp	1
C122-199	0558006199	Shield, 9.9 mm, 360 – 600 amp	1
3 L47-796	21796	Diffuser, 50 amp	1
C47-944	21944	Diffuser, 100 – 600 amp	1
4 C47-082	37082	Nozzle retaining cap	1
5 C122-908	0558006908	Nozzle, CoolFlow™, .8 mm, 35 amp	1
C122-8010	0558008010	Nozzle, CoolFlow, 1.0 mm, PR, 45 – 55 amp	1
C122-6010	0558006010	Nozzle, CoolFlow, 1.0 mm, 50 amp	1
C122-014	0558006014	Nozzle, CoolFlow, 1.4 mm, 100 amp	1
C122-018	0558006018	Nozzle, CoolFlow, 1.8 mm, 130 amp	1
C122-020	0558006020	Nozzle, CoolFlow, 2.0 mm, 200 amp	1
C122-023	0558006023	Nozzle, CoolFlow, 2.3 mm, 280 amp	1
C122-025	0558006025	Nozzle, CoolFlow, 2.5 mm, 300 amp	1
C122-030	0558006030	Nozzle, CoolFlow, 3.0 mm, 360 amp	1
C122-036	0558006036	Nozzle, CoolFlow, 3.6 mm, 450 amp	1
C122-041	0558006041	Nozzle, CoolFlow, 4.1 mm, 600 amp	1
6 C122-1059	0558005459	Electrode, SilverLine [®] , O ₂ , 50 amp	1
7 C122-1014	0558003914	Electrode, SilverLine, O ₂ , 100 – 300 amp	1
8 C122-1091	0558007791	Electrode, SilverLine, O ₂ , 360 – 450 amp	1
9 C122-928	0558003928	Electrode, SS/AL, 600 amp	1
10 C122-924	0558003924	Electrode holder	1
11 C122-457	0558005457	Gas swirl baffle, 4X.022, 35 – 70 amp	1
C122-533	0558002533	Gas swirl baffle, 4X.032, 100 – 280 amp	1
C122-530R	0558002530R	Gas swirl baffle, 8X.047, reverse, 360 – 450 amp	1
C10-660	0558001625	Gas swirl baffle, 8X.047, 300 – 600 amp	1

Maintenance items

Centricut part number	Reference number	Description	Pkg qty
12 C47-073	37073	Screw, contact ring	1
13 C47-071	0558003858	Contact ring assembly	1
C10-483	0558001626	Double threaded mounting tube	1
14 C122-804	0558003804	Torch body	1

New technology improvements!



**Technology products for ESAB[®],
Kjellberg[®] and Kaliburn[®]**

Hypertherm[®]

Cut with confidence™

Hypertherm, Inc.
Hanover, NH 03755 USA
603-643-3441 Tel

Hypertherm (S) Pte Ltd.
Singapore 349567
65 6841 2489 Tel

**Hypertherm (Shanghai)
Trading Co., Ltd.**
PR China 200052
86-21 5258 3330 /1 Tel

Hypertherm Europe B.V.
4704 SE Roosendaal, Nederland
31 165 596907 Tel

HYPERTHERM BRASIL LTDA.
Guarulhos, SP - Brasil
55 11 2409 2636 Tel

www.hypertherm.com



Hypertherm and Centricut are registered trademarks of Hypertherm, Inc. and may be registered in the United States and/or other countries. All other trademarks are the properties of their respective owners.