

## Product Bulletin: SilverLine® Torch Assemblies for PT-600

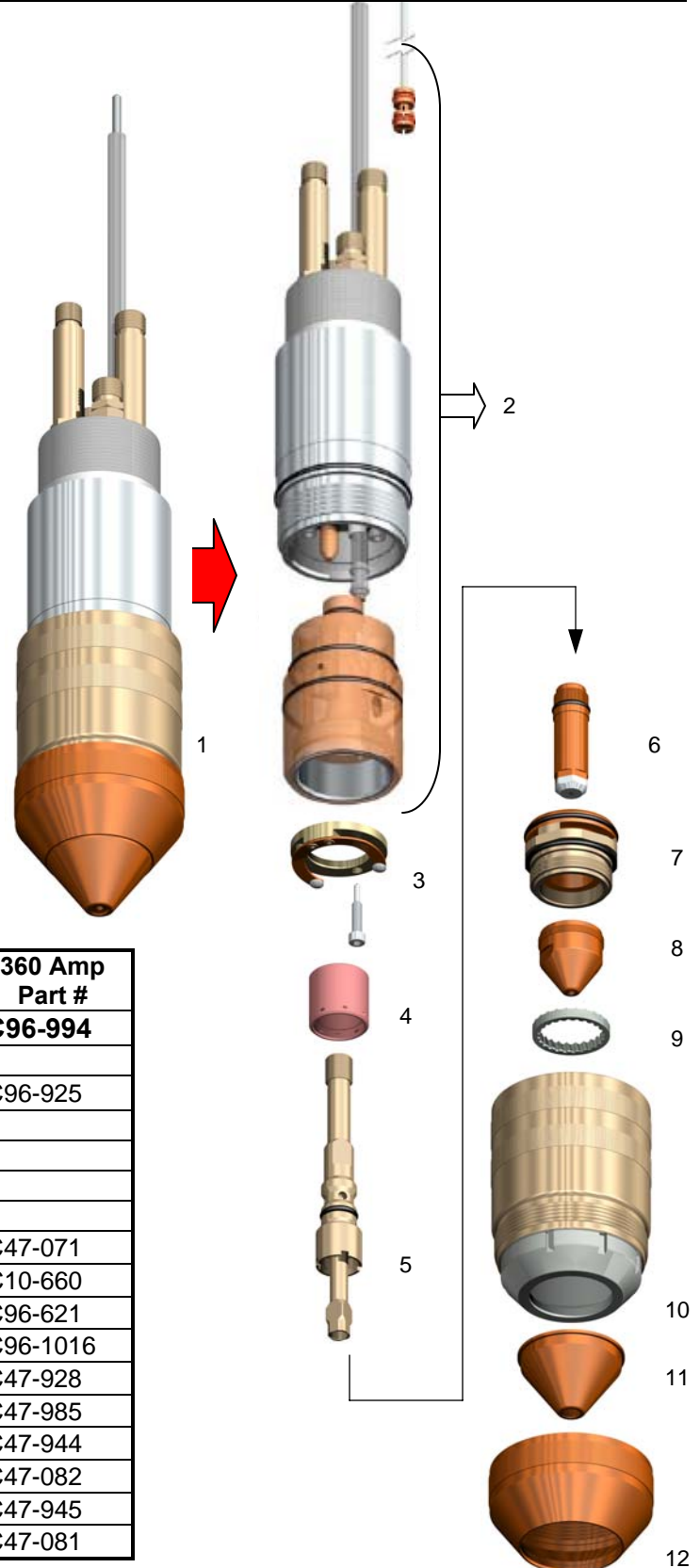
Centricut's PT-600 SilverLine® Torch Assemblies are available in 250 Amp and 360 Amp styles. They are factory assembled and leak tested to provide quick and reliable torch change-outs.

These torches include Extended Life Nozzle Bases and SilverLine® Electrodes to provide optimum performance. They also include a new modular torch assembly that provides the option of replacing the Insulator and Insulating Tube Kit for reduced downtime and more cost effective field repairs.

In addition these modular torches feature a unique threaded and glued sleeve-to-shell locking design that improves long term alignment of torch components.

### Benefits of PT-600 SilverLine Torch Assembly:

- **Minimize system downtime** with faster, more reliable torch swap-outs based on our preassembled and leak tested design
- **Improved long term alignment** of torch components with unique threaded and glued sleeve-to-shell locking design
- **Longer parts life** with performance enhancing SilverLine Electrode and Extended Life Nozzle Base
- **Expanded serviceability** options from modular torch design
- **Simplified ordering** and inventory with only 1 catalog number



Item	Description	250 Amp Part #	360 Amp Part #
<b>1</b>	<b>SilverLine® Torch Assembly</b>	<b>C96-993</b>	<b>C96-994</b>
	consists of:		
2	Modular Torch Body	C96-925	C96-925
	includes:		
	L47-075 Pilot Arc Wire and Collet Assembly		
	C47-066 Torch Body		
	C47-083 Insulator Assembly		
3	Contact Ring with Screw	C47-071	C47-071
4	Gas Baffle	C10-660	C10-660
5	Electrode Holder	C96-621	C96-621
6	SilverLine® Electrode	C96-1024	C96-1016
7	Extended Life Nozzle Base	C47-928	C47-928
8	Nozzle Tip	C47-922	C47-985
9	Diffuser	C47-944	C47-944
10	Nozzle Retaining Cap	C47-082	C47-082
11	Shield	C47-802	C47-945
12	Shield Retainer	C47-081	C47-081

Centricut is in no way affiliated with ESAB®; PT-600 is a product of ESAB®

1-800-752-7623 ■ 1-603-298-7849 ■ FAX 1-603-298-5938 ■ [WWW.CENTRICUT.COM](http://WWW.CENTRICUT.COM)

Centricut, Two Technology Drive, West Lebanon, NH USA 03784

C96-PB001 rev10/06