

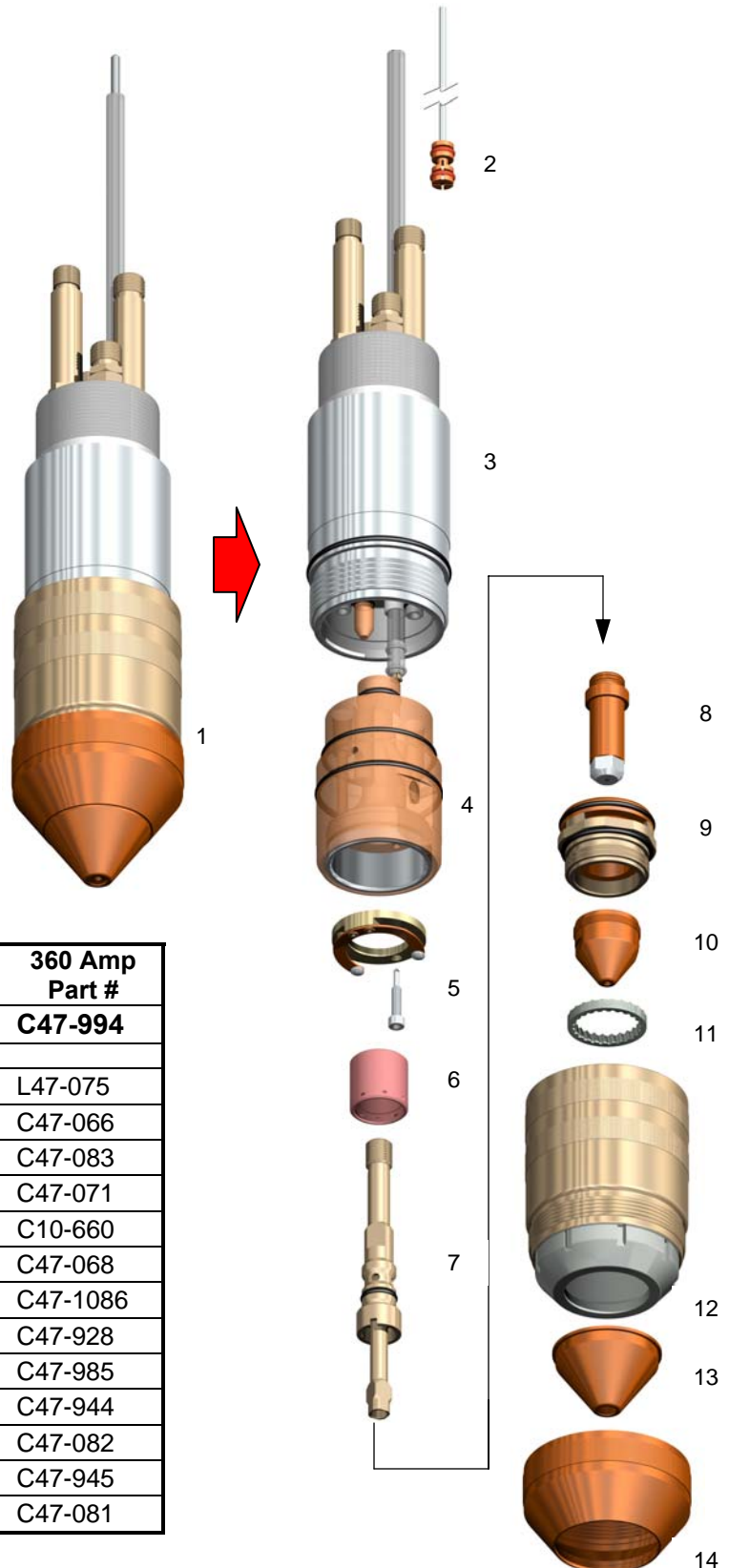
Product Bulletin: SilverLine® Torch Assemblies for PT-19XLS

Centricut's PT-19XLS SilverLine® Torch Assemblies are available in 250 Amp and 360 Amp styles. They are factory assembled and leak tested to provide quick and reliable torch change-outs.

These torches include Extended Life Nozzle Bases and SilverLine® Electrodes to provide optimum performance. In addition they feature a unique threaded and glued sleeve-to-shell locking design that improves long term alignment of torch components.

Benefits of PT-19XLS SilverLine Torch Assembly:

- **Minimize system downtime** with faster, more reliable torch swap-outs based on our preassembled and leak tested design
- **Improved long term alignment** of torch components with unique threaded and glued sleeve-to-shell locking design
- **Longer parts life** with performance enhancing SilverLine Electrode and Extended Life Nozzle Base
- **Simplified ordering** and inventory with only 1 catalog number



Item	Description	250 Amp Part #	360 Amp Part #
1	SilverLine® Torch Assembly	C47-993	C47-994
	consists of:		
2	Pilot Arc Wire and Collet Assembly	L47-075	L47-075
3	Torch Body	C47-066	C47-066
4	Insulator Assembly	C47-083	C47-083
5	Contact Ring with Screw	C47-071	C47-071
6	Gas Baffle	C10-660	C10-660
7	Electrode Holder	C47-068	C47-068
8	SilverLine® Electrode	C47-1096	C47-1086
9	Extended Life Nozzle Base	C47-928	C47-928
10	Nozzle Tip	C47-922	C47-985
11	Diffuser	C47-944	C47-944
12	Nozzle Retaining Cap	C47-082	C47-082
13	Shield	C47-802	C47-945
14	Shield Retainer	C47-081	C47-081

Centricut is in no way affiliated with ESAB®; PT-19XLS is a product of ESAB®